

Education Outside the Classroom

Installation Instructions

Entry code and Password inside

(©) Worsfold Software 2011

www.worsfoldsoftware.co.nz

26 Chandler Crescent, Clyde 9930



Education Outside the Classroom (EOTC) is supplied on a CD or can be downloaded from the Worsfold Software website. A registration file will be emailed at the time of sending the CD.

If the CD does not autoboot (run automatically after insertion into your CD drive) then use Windows Explorer to find the CD and run the program EOTCinstall.exe on the CD. One way or another, you'll arrive at the opening screen, shown below.

There are but three options on the screen of the installation CD, shown below.

The first enables you to proceed to the installation of the package.

The second opens the package manual (which can be found on the CD – named eotc.pdf)

And the third allows you to exit.



1. The installation process

This process will install the package which consists of a program and several support files.

Networking

Should you wish to install the package on a network (for which it is

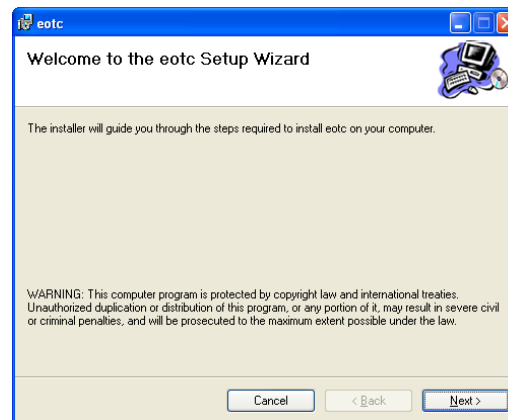
ideally suited) then please refer to the notes on networking later in this manual

Installation

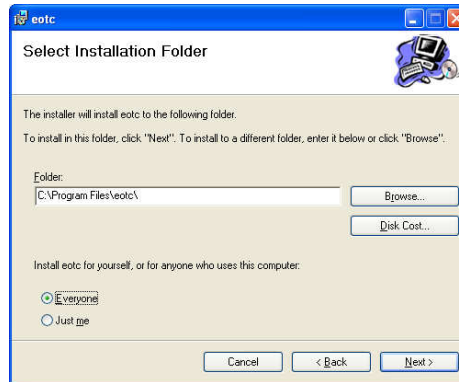
The first time you run the installation process you will be greeted with the screen shown below.

Subsequent installations (of updates) will begin with a slightly different screen. This process is described later.

If you have downloaded the package from the worsfold Software web site (www.worsfoldsoftware.co.nz) then you will have a zip file from which two files (eotc.msi file and setup.exe) can be extracted to a directory of your choice, from whence you can run the setup program. This will bring you in to the installation process at this point.



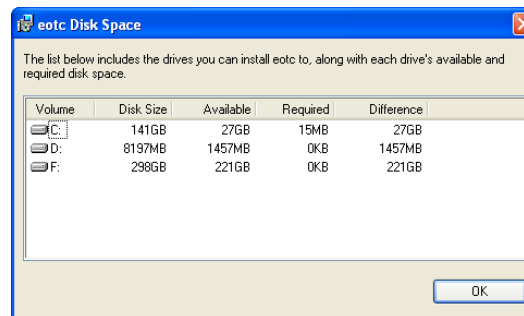
Click on the Next button and you will be asked to confirm the destination, where you wish to have the package installed.



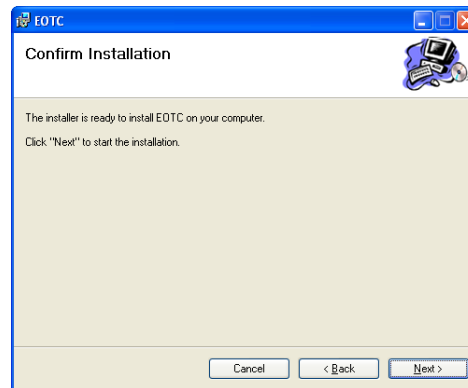
By default, the process will attempt to create a '\eotc' subdirectory under 'Program Files' as shown above. You can browse to select a different location if you prefer.

Please note that, if you are installing on to a 64-bit computer, then you should install into the \Program files x86 directory.

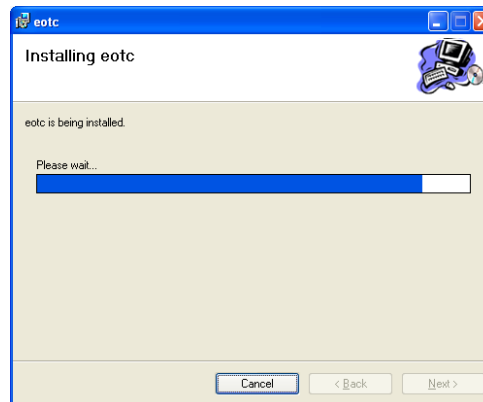
There is a 'Disk Cost' button on this screen which reveals the following, or something similar...depending on your computer. You can use this to determine how much space the program will require. The screen below indicates that the package will require 15MB – and most of this is taken



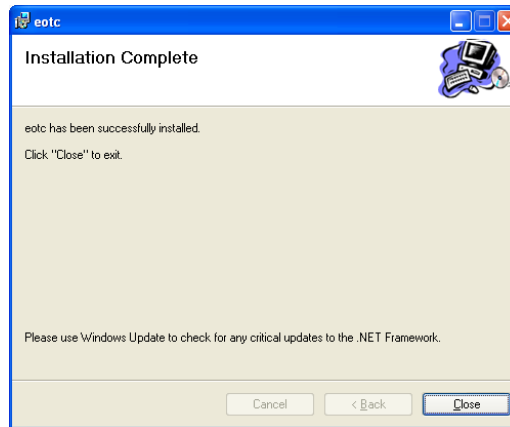
up by the included system files which get installed along with the program. Once your package is up and running you will also have a database or three, each of which be several megabytes in size.



Next comes the confirmation screen, which really doesn't tell you too much :



... followed by the 'Progress' screen ... which can, depending on your computer, take quite some time, and can even appear to freeze for a few minutes!



... arriving finally at the 'Process Complete' screen :

Networking EOTC

Due to increased security 'enhancements' made to their operating system(s) by Microsoft, networking Education Outside the Classroom is not quite the simple process which it had been anticipated that it would be. It was intended that you simply install the package on a file server and access it, as usual, from each terminal. The beauty of the .net framework is that system files need no longer be installed on each and every terminal.

However, Microsoft, in its wisdom, has greatly increased the security required to access the program on the fileserver from a terminal.

Make sure that you have installed the latest Service Pack for the Dot Net Framework. The package uses aspects of version 3.5

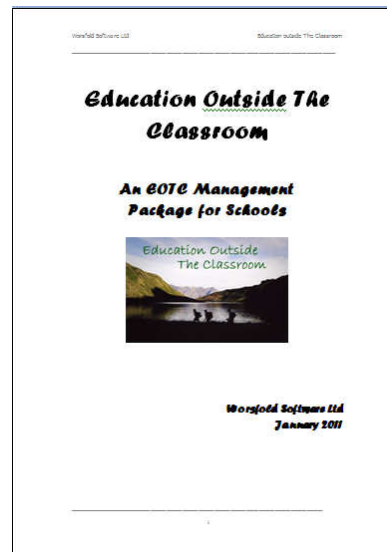
You will need to provide users with full rights to the \eotc folder on the file server.

Every school has its own particular way of managing their network but the above does seem to be a reasonably generic approach.

The alternative is to install the package on to every terminal – the 'Distributed Client' approach - and to have them point to a central directory on the file server (where the package is also installed) where the database resides – along with the registration file, Kamar export file etc.

This process works well and the dialogue to link to the fileserver, where the database(s) reside, forms part of the first-entry process, described below.

The manual



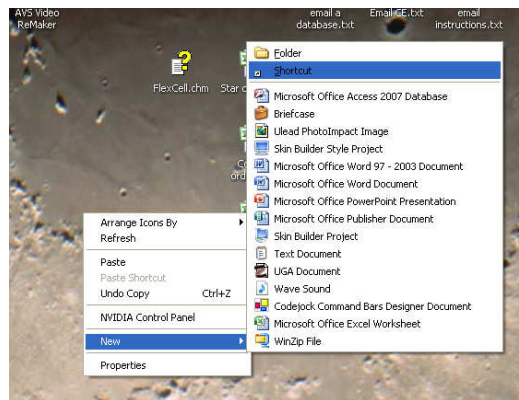
The Education Outside the Classroom manual is included on the CD in the form of a .pdf file. Clicking on the third button will cause the

manual to be displayed on the screen from whence you can view it or print it or save it to a destination of your own choice.

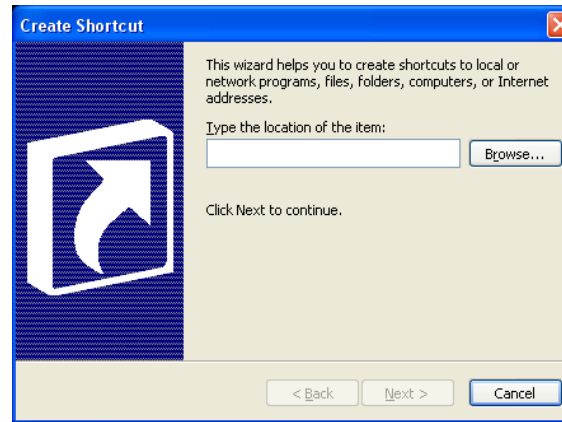
Running the program

EOTC has one application file (or program) called eotc.exe and this is found in your \eotc directory.

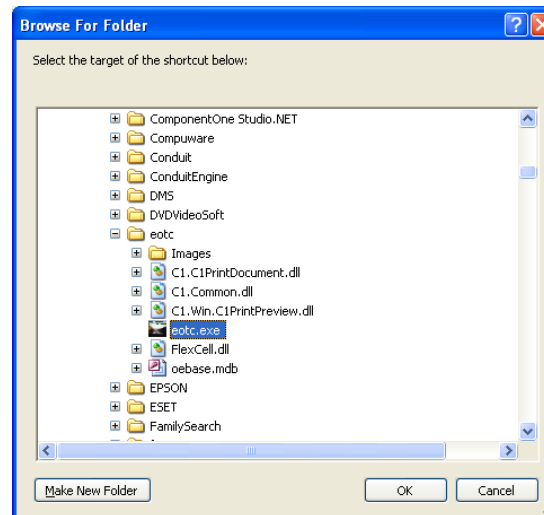
You will probably wish to create a shortcut to this program and to have this shortcut on your desktop. To do this, right click with your mouse on the desk top....



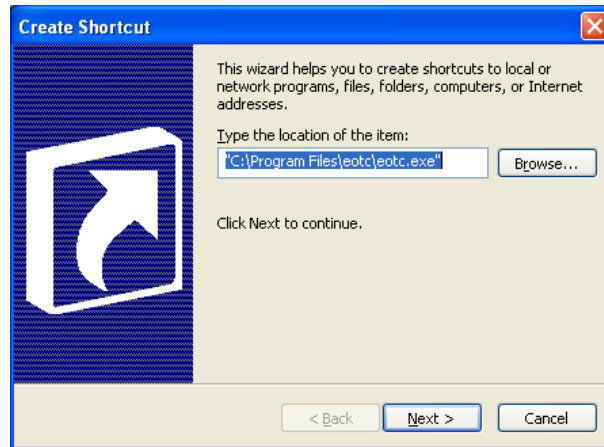
Select 'New' followed by 'Shortcut', as shown above. The following dialogue (or one like it, depending on the version of Windows which you are running) will appear. Either 'Browse' to identify the location of eotc.exe or type it in if you know it. Then click 'Next'



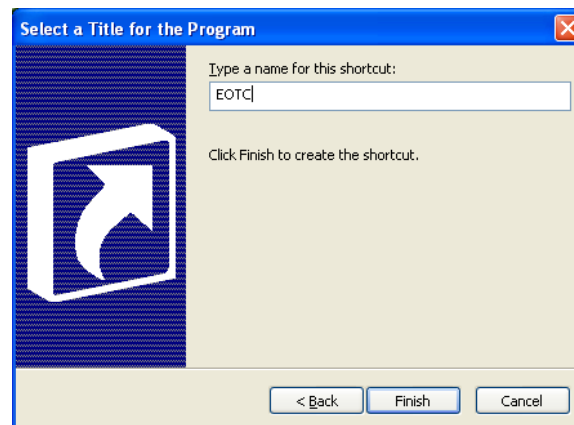
The second step will appear via which you can browse to indicate the location of eotc.exe :



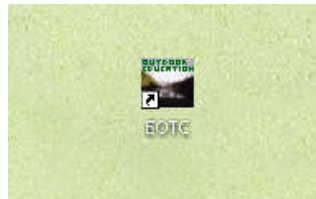
Click OK and you will return to the second screen ...



... with the program now identified. Click 'Next' to proceed to the 'Shortcut Name' screen, and replace the somewhat obscure 'eotc.exe' with the abbreviation 'EOTC' as shown below.

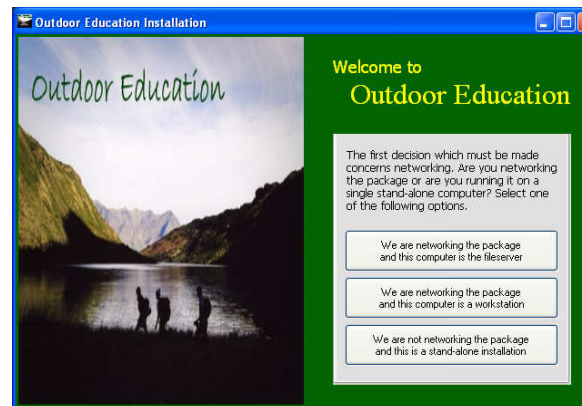


Click 'Finish' to do so and your shortcut will appear :



Now, to access the program you simply have to double click on the shortcut.

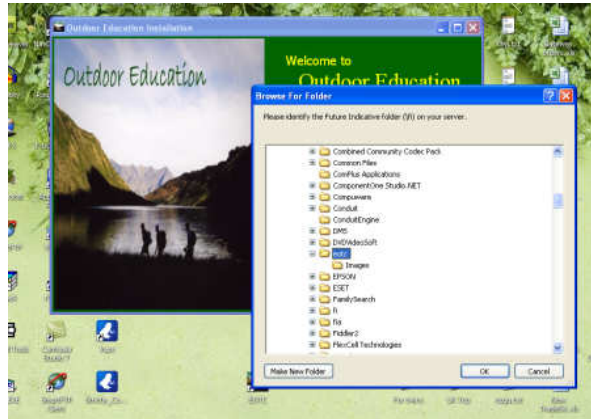
The first time you run either the main program on either the file server or a terminal or a standalone machine you will be greeted with the following screen.



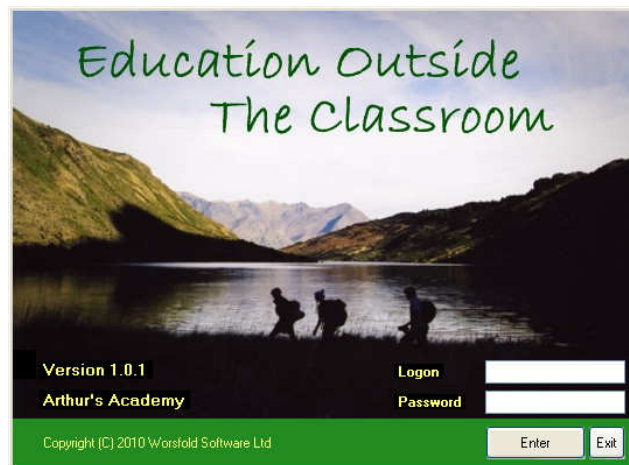
The package needs to know where the current years eotc database is kept.

If you are on a file server or on a standalone machine then its right there in the same directory and clicking the first or third of the buttons will tell you so.

If however, you are on a terminal then click the second button and you will, by clicking 'Proceed' on the screen shown below, be asked to identify the path to the fileserver where EOTC is installed and where the database will live.

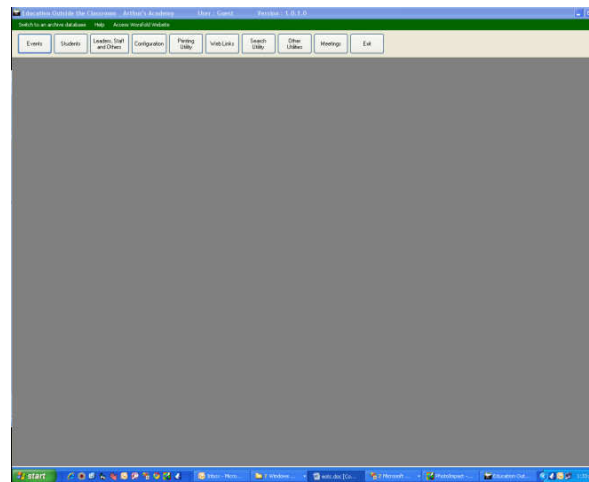


Once you've done that, you will proceed directly to the opening ('Splash') screen for the package.



Initially, you should enter using the entry code : **guest** and password : **wors** Later on, you will set you own entry or entries up and may wish to change the password for 'guest' so that others cannot enter uninvited.

Once you have successfully logged on you will arrive at the main package screen, from whence all other processes occur.

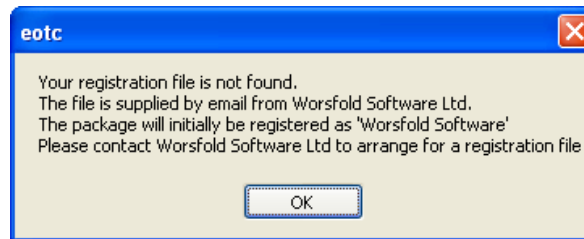


Licensing

The program is licensed to a school and this is recognised by a small file named 'eotcreg.lic'. This is a registration file which contains your school name. It is emailed to you at the time when your order for the package is mailed to you.

If you have NOT copied your license file into your \eotc directory then the program will run perfectly but you will be unable to send printouts to your printer. Your `school name` will be `Worsfold Demonstration`. Any data you enter will be held perfectly safely in the database and will NOT be lost when you DO put your license file into place.

The warning which you will receive to alert you is shown below.



The email which is sent out with the license file is reproduced below.

"Education Outside the Classroom order confirmation and registration

Greetings from Worsfold Software Ltd

You have recently ordered the Education Outside the Classroom package and this has been put in the post to you.

Please find attached a small registration file. This file is not intended to be opened. It is simply an encrypted registration file.

Once you have installed the package, copy this file to your new

\eotc directory. This will indicate to the program that the package has been registered for your school.

If there is no file attached then please contact me, either by email at the above address, or by phone on 03 449 2094.

If you have any questions or comments or suggestions concerning the package please do not hesitate to contact me."

Please note that, as described in the email, the small file attachment is NOT intended to be 'opened', but simply copied or 'saved as' into your \eotc directory. If, in spite of these instructions, you did attempt to open the file, and immediately emailed me to let me know that it would not open, then you are not alone!

Subsequent licensing

After your first year of use of the package, an invoice will be sent to you for the annual license fee (currently \$175.00 + GST for 2011). License invoices are not posted until April each year.

This concludes the installation process. If you have any questions
please either :

call Worsfold Software PH 03 449 2094

or e-mail to randcbutler@inspire.net.nz